

NEWSLINE

SALE PRIMARY SCHOOL

NO. 545

Wednesday
January 28, 2026

Macalister Street, Sale
PO Box 59, Sale Vic 3850
Phone: 03 5144 5545
Email: sale.ps@education.vic.gov.au
Website: saleps.vic.edu.au

No. 01

'Maximising growth in the whole child – academically, socially and emotionally'

Dates to Remember

January

Wednesday January 28

- First day of school for grades 1 – 6 students

February

Monday February 2

- First day of school for foundation students

Monday February 16

- House Swimming Carnival (Gr 3-6 students)

March

Thursday March 5

- School Photo Day

Monday March 9

- Public Holiday – Labour Day

Thursday March 26

- Parent/Teacher/Student Interview Day

April

Thursday April 2

- Last day of term 1 – 2.15pm dismissal

Principal's Report – Chris Malone



Welcome Back

On behalf of all staff at Sale Primary School No. 545, we warmly welcome all students and their families to what will be a very exciting year ahead.

We also welcome our new students and families throughout the school and a special welcome is also extended to our 2026 Foundation (Prep) students who will

commence this coming Monday.

It was fantastic to see so many smiling faces eager to return to school as the students arrived at school today. There was a genuine buzz about the place with lots of excitement.

We look forward to a positive and rewarding relationship in the years to come.

All staff continue to work hard in ensuring that we provide the best learning experiences for all of our students. Please speak to your child's teacher if you have any questions.

Welcome New Staff

We extend a warm welcome to our new teaching and education support staff. The new 2026 classroom teachers are Bec Vincent, Glenn Vincent, Kaitlyn Taylor and Ella Ronchi.

Bike Shed

Our bike shed has a secure fence to protect student's scooters and bikes. Please use the gate closest to Victoria Park to access the school and always lock your bike/scooter. These expensive items are brought to school at your own risk.

Annual Privacy Reminder

Our school collects, uses, discloses and stores student and parent personal information for standard school functions or where permitted by law, as stated in the [Schools' Privacy Policy](#)

Please take time to remind yourself of the school's collection statement, found on our website at www.saleps.vic.edu.au.

For more information about privacy, see [Schools' Privacy Policy](#)



Hours of Supervision

Parents are reminded that the hours of supervision in the yard are from 8:45am until 3:30pm. As such, parents are encouraged to ensure their child/ren arrive at school **no earlier than 8:30am** and that they are prompt in collecting their child/ren at 3:15pm. If you need to drop your child off early or pick your child up late, please make a booking with our Before and After School Program provider TheirCare. Your support in this matter is appreciated as we work together to ensure the safety of your children

Late Arrivals and Students Picked up early

Classrooms open at 8.45am and classes begin at 9:00am. It would be appreciated if students could be here on time. We understand that there are occasions where late arrival is unavoidable, but learning starts at 9:00am and a late arrival means lost learning and a disruption to the learning environment and this needs to be avoided as much as possible. Parents need to be aware that students who arrive late to school **MUST come via the office to be signed in and receive a late slip via Compass to have their arrival at school recorded.**

Similarly parents/guardians must have their child signed out via the Compass kiosk at the school office if they need to pick their child/ren up early from school. If children are returned to school, their return must also be recorded at the school office via the Compass kiosk.

Only those people nominated by parents as emergency contacts are able to collect children from school.

Children who are collected late (after 3.30pm) will be directed to the school office by yard duty teachers and will need to be collected by parents from the office.

Student Attendance: 'It's Cool to be at School!'

In order for students to maximise their learning opportunities at school, they need to attend on a regular basis. We are fully aware that there are times when students will be absent due to illness or unavoidable family commitments but hopefully, these would be rare events and that our students will be in attendance every other school day.

Slogans such as “It’s Cool to be at School” and “It’s not OK to be Away” will be enforced at the school in 2026. We ask that parents notify the **school office** via phone, email (sale.ps@education.vic.gov.au), Compass App, a note or in person confirming your child’s absence on any given day so that we know that the absence is approved, as well as reassuring the school that your child is safe and in your care on a normal school day. **Please do not message classroom teachers of your child’s absence.**

We will be following up on all unexplained absences at 10.00am via Compass.

We ask parents to support this approach by communicating clearly with the school office when your child is going to be absent prior to 9.45am if possible.

Parent Participation at Sale Primary School

A feature of an effective school can be measured in part on parent participation and input. At Sale we welcome and encourage parent participation as it supports everything we do. As the year progresses, parents will be given many opportunities to be involved in the school and I encourage all parents to offer their assistance where and when possible. Please consider your involvement as follows:

- Parents and Friends Committee
- School Council
- Garden Party Committee
- Breakfast Club
- Camps and Excursions
- Sporting Events
- Classroom Programs (as negotiated with classroom teachers)
- School Events (Concerts / Theme Days / Family Nights etc.)

NB: A Volunteer Induction and Working With Children Check will be required

Compulsory School Uniform

The school guidelines make it very clear as to the expectations of all students in regards to school uniform. It is expected, even at this early stage of the year, that all students adhere to these guidelines and that they are in full school uniform, including a school hat and predominantly black shoes. Staff will contact the parents of those students who are not in uniform and do not have a note from home explaining this.



Please note - Foundation-Grade 2 students can wear 'alternate runners' on their physical education day and remain in these shoes for the day to avoid changing.

Student Management

Over the coming weeks, all students will be discussing with their teachers our approach to Student Management.

When discussing behaviour expectations, teachers and students will explore:

- ***The types of positive behaviours we expect from each other throughout the school and the positive reinforcements that will follow when students exhibit these positive behaviours (GREEN).***
- ***The types of behaviours that students will be required to self-correct and the types of strategies they can use to do so (ORANGE).***
- ***The types of behaviours that will not be tolerated at school and the types of consequences that will follow if students behave in an unacceptable manner (RED).***

School Council Elections

School Council elections are held in Term 1 of each school year. Nominations for the School Council of the Sale Primary School No. 545 will open **this Friday January 30** and will close at **4.00pm on Friday February 6**.

We have four elected parent category members up for re-election, as well as two elected Department of Education employee category members.

If you would like to stand for School Council, or would like to nominate someone, please contact the school office for further information.

Changes to Ministerial Order for School Council

From 2026, parents, carers and community members who would like to join the school council need a working with children (WWC) clearance to nominate. If you are considering nominating for school council, and don't already have a WWCC, I encourage you to apply for a volunteer WWC check as soon as possible. This will allow for processing times, which are estimated to be from 3 to 12 weeks.

Please note that if you do not hold a WWC clearance, you will not be able to nominate for school council, so it is vital that you prepare in advance. Obtaining a WWC clearance is free for volunteers, and you can apply online at [Service Victoria](#).

When applying for your volunteer WWC check, please nominate the Department of Education as the organisation you are working for.

If you already hold an employee WWC clearance, you do not need to obtain a volunteer WWC clearance to nominate for school council.

Victorian Institute of Teaching-registered teachers and school students who are interested in joining school council are not required to obtain a WWC clearance.

Current parents and community members of school council do not need to apply for a WWC check immediately. Current members only need a WWC clearance if their term ends and they wish to nominate or be co-opted again. For more information, refer to Ministerial Order 1280 (Constitution of Government School Councils) 2020.

Bus Travellers

We have many students who use buses before and after school. Bus travellers need to report to Mr Hayman or Mr Malone each afternoon of travel at 3.10pm at the bus shelter.

These students will be checked off each afternoon as they board their buses. Please contact the school office if there are changes to your children's travel arrangements.

We ask that parents of any Foundation students who will be travelling to and from school via bus, to please see the bus driver to discuss pick-up and drop-off destinations.

Parents are also advised that they need to inform the office and complete relevant "Application to Travel" forms if they need their child/ren to use "Out of Town Bus Services" that operate through the McMillan Park interchange. The school needs to be informed of the Bus Route and Number and the frequency of travel.



Student Information Forms – Update details

Please notify the office if there have been any changes to your telephone number, address, medical issues, emergency contacts or work phone numbers. It is **vital** that the school has this information for our records. You can do this by either phoning the office (5144 5545) or email sale.ps@education.vic.gov.au, or simply drop in.

Messages for Students

Where possible, we ask that if parents wish the office staff to pass a message on to their child/ren, they do so early enough so that the message can be relayed at either the recess (10.30am-10.50pm) or lunchtime (1.00pm-1.35pm) breaks.

This will minimise interruption of phone calls and announcements for teachers and students during class time. We understand there will be instances where this is not possible, but we do ask for parent cooperation with this request.

Mobile Phone/Smartwatch Policy

Mobile phones and smartwatches are becoming commonplace amongst children. In line with the Department of Education's policy on student use of mobile phones, we have a policy to protect the personal privacy of students, staff and parents, and to ensure that the use of electronic devices such as mobile phones and smartwatches is not disruptive to the learning environment at school.

As a consequence, the following applies:

- Only students with a valid or compelling reason are to possess a mobile phone or other personal mobile device at school (to be negotiated with Principal).
- Students who bring mobile phones and other personal mobile devices to school must have them switched off and securely stored at the school office.
- Mobile phones and smartwatches are considered valuable items, and are brought to school at the owner's (student, parent or carer's) risk. Please note that Sale Primary School does not have accident insurance for accidental property damage or theft. **If you have a mobile phone at school please obtain a copy of the Mobile Phone Policy and Personal Property Policy from the school office.**



Personal goods brought to school at owner's risk

The Department of Education (DoE) has asked all schools to remind parents that any property brought to school by students is NOT insured and DoE, or the school, do not accept any responsibility for any loss or damage. As a result, the school actively discourages students bringing expensive or precious toys, sporting equipment, mobiles phones (as mentioned previously) etc. to school.

Student Accident Insurance

The Department of Education have requested that all schools inform parents about details regarding DoE coverage of medical expenses of students injured at school or during school activities (eg. excursions and camps).

- DoE **will not** pay for the injury of a student who is injured in an **accident** at school or during a school activity (unless the injury is caused by negligence of DoE, School Council, employee or volunteer)
- Therefore, in cases where a student has been injured in any accident, the injured person (or their parent or guardian) is responsible for the cost of medical treatment. This includes the cost of transport to a medical facility or their home via ambulance.

Information regarding companies that provide individual student insurance can be obtained from the school office.

Severe Allergies & Asthma

The Sale Primary School staff are extremely aware of their duty of care when managing the students in their care. There are students in our school who have allergies to nuts, sesame, milk, dairy, eggs and dogs.

These allergies can result in students having an anaphylactic reaction (a potential life threatening situation) if exposed to these foods.



Therefore, we would appreciate your assistance in maintaining a safe environment for all of our students through education. Please speak to your child about the importance of:

- Washing hands (so that disease, infection or possible food is not transferred)
- Students only eating their own food (not sharing water bottles, drinks, snacks etc., and that lunch boxes, drink bottles, etc. are clearly named).
- Clearly labelling ingredients of any non-packaged food that is brought in for a special occasion so that students and staff are aware.

All students with asthma must present a signed copy of the 'School Camp and Excursion' Asthma Foundation form **ON THE DAY** of any excursion or camp (a copy of which is available from the school office). Excursions include swimming, local sports or any other general excursion or camp.

If your child suffers from asthma, anaphylaxis or any other medical condition, the school **MUST** have a recent copy of the action plan as prepared by a doctor.

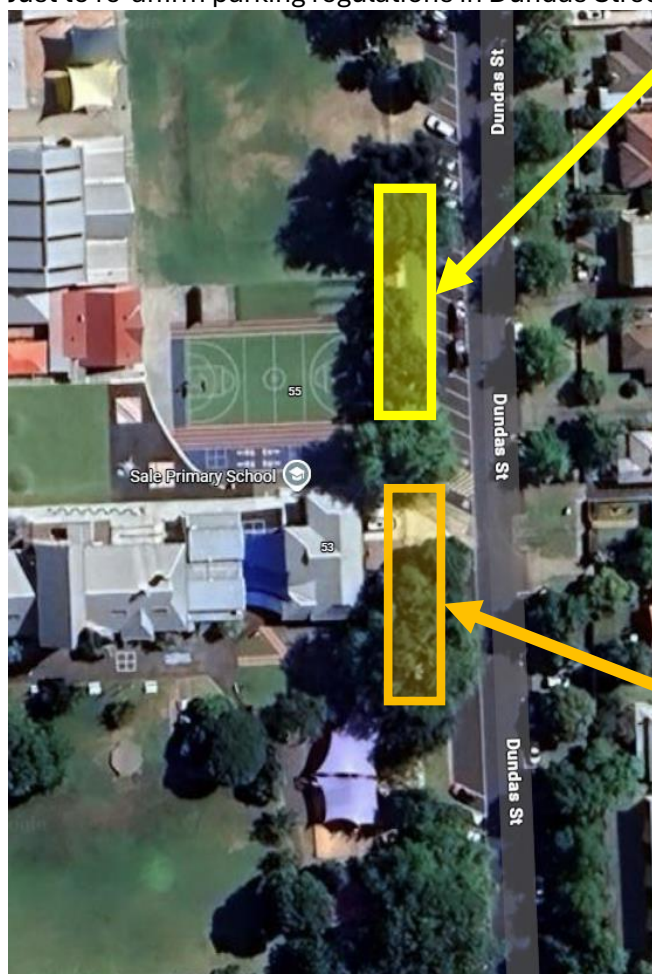
We appreciate your support in these matters.

Parking Around Our School

Parking in Dundas Street – Drop off Zone

As we have a number of new families to 545 this year, many may not be aware that there is a drop-off zone in Dundas Street, where cars cannot be left unattended. It operates in the 13 car spaces (marked with a yellow line in the middle of the road) north of the 2 disabled parks in Dundas Street. Parents need to also be aware that they cannot use the bus parking zone to pick up or drop off students.

Just to re-affirm parking regulations in Dundas Street.



Drop off zone

8.30am – 9.30am & 3.00pm -4.00pm
Parents are permitted to park for a maximum of 2 minutes and must remain within 3 metres of their vehicle at all times.

A driver must not stop at the side of a road marked with a continuous yellow edge line (the 13 parking bays in Dundas Street)



Bus zone

8.30am–9.00am & 3.00pm-4.00pm
school days – No parking during these times.



The shire traffic officers do monitor this area and will issue fines to cars left unattended in the 'drop off' zone, or if cars remain stationary in this area beyond the 2 minute timeframe.

There are also other parking restrictions that parents need to be aware are operating in Cunninghame Street. Parents are encouraged to drop their children off in Market Street (well back from the Market Street/Cunninghame Street T intersection) to allow them to continue using the Cunninghame Street crossing. There is also a 'no parking' zone at the corner of Dundas and Cunninghame Streets (directly under the big tree). This has been established to ensure no vehicle or its occupants are positioned under the big red gum tree at any time.

Parents are reminded that there are plenty of parking spaces further up Cunninghame Street (outside of the Church) and Marley Street (adjoining Victoria Park).

Newsline

Our Newsline is produced each Tuesday.

Parents are able to access a copy in the following ways:

- Via the school's communication app "Compass"
- Via the school's website at www.saleps.vic.edu.au
- Via a link on our Facebook page to the website, or
- A hard copy can be collected by parents or students from the school office.

We are encouraging parents to preferably access Newsline via the Compass App (which will include full colour photographs) or to view an edited version (without photographs) on our school's website at www.saleps.vic.edu.au which will be uploaded every Tuesday afternoon.

Lost Property

Parents, please ensure that all items that your child brings to school are **clearly named**. This includes **all** items of their uniform, lunch boxes, drink bottles, bathers, towels, goggles, etc.

Some lost property is located in the sickbay and all items that are named are promptly returned to their respective owners. Any unnamed property is kept for a short period of time before being sent to either a local opportunity shop or the second hand uniform shop as per the school's Lost Property Policy.

ICT News – Dave Hall



Welcome to 2026 where exciting things are happening in the ICT room. We have one new 3D printer, taking our total to 3 and will be running the 3D Print-A- Car challenge again for year 5-6 students who would like to try their hand at designing a cool and efficient car. We will also be running a separate 3D printing group for students who want to help with preparing a stall for this year's Garden Party. All this will be discussed in the coming weeks.

I look forward to seeing all those smiling faces again in the next week - ready to take on new challenges.



Music News -Phil Bartlett



Hi everyone. I am really looking forward to another amazing year of music at 545.

Classroom Music

Classroom music at 545 involves lots of fun activities. From foundation to grade six, students learn about elements of music including melody, harmony, and rhythm. Students are involved in activities including singing, body percussion, bucket drumming, composition, guitar, ukulele, music theory, and the list goes on. Each student will attend music for one semester

Choirs

All choirs (Foundation, Junior, Middle and Senior) will commence this week. Students will be singing a great selection of songs including classic 'old school' hits and songs from the 2020's. Students will also be learning about important vocal technique, the discipline of rehearsal and the excitement of performance.

Taiko (Japanese Drumming)

Once again, we're going to be doing some exciting things in Taiko this year, and it promises to be lots of fun, with a bit of hard work thrown in. During Taiko, students will learn exciting rhythmic patterns, important drumming technique, movement and dramatic actions. Students who performed in Taiko last year, will automatically be part of the group this year. Students in grade four, five and six interested in being part of this amazing group, are welcome to come along to try-outs (day and time to be confirmed).

Rock Bands

Our Rock Bands will continue this year for grade five and six students (and possibly grade four, depending on numbers). The bands will be performing classic rock songs as well as the latest pop songs. We'll require drums, bass, guitar, keyboard and singers (there may be room for some extra instruments, depending on numbers). Auditions for the 545 Rock Bands will take place soon. Students are asked to listen out for announcements during the week.

Student Commitment

It is very important to note that students are expected to commit to a music ensemble for **THE ENTIRE YEAR**. Students are also expected to attend **EVERY** rehearsal, arriving on time and remembering all equipment. All foundation, junior and middle students will be part of choir.

Performances

Most of our 2026 ensembles and bands will be involved in performances throughout the year.

Each student in grade one to six will attend music for one semester, and foundations will have music for 45 minutes each week for the year. I'm also excited to add some drama into the mix this year.

Once again, it's great to be back and I can't wait to get started!

Swimming Carnival – Ben Chivers



Welcome to Health and Physical Education for 2026.

Our 545 Grade 3-6 Swimming Carnival in 2026 will be held on Monday February 16, 2026. Information will come home in the first week of term asking parents of year 3 and new students to 545 to complete a form regarding their child's swimming ability.

We would also ask that parents/guardians please consider offering to volunteer to help on the carnival day. Roles include; starter, starting marshals, finishing marshals, timers and recorders. Your help at this event will be greatly appreciated and is essential to enable the Carnival to go ahead.



Health and Physical Education Lessons

Physical Education Lessons have resumed for 2026. Please ensure that your child wears shoes suitable for running and sports on the day of their HPE lesson.

Sun Protection

All students are required to bring their wide brimmed school hat to HPE lessons. Sunglasses are also highly encouraged, and will be allowed to be worn during outside lessons. Students are encouraged to apply sunscreen in the mornings prior to coming to school. Application of sunscreen is highly encouraged prior to HPE lessons. Students can bring along their own sunscreen (roll on type preferred) to reapply during the day.

Art Room News – Lou Cooper



Welcome back to the art room for 2026! FB, FH, FW, JV, JB, JT, MS, MR, SC, SW and SS will be doing Visual and Media Art in Semester 1.

If your child prefers to wear their own smock, send one along with them. An old shirt or t-shirt is suffice. The art room has spare smocks also.

I am excited to see the wonderful artworks your children will be creating!



Breakfast Club

BREAKFAST CLUB
VOLUNTEERS
NEEDED

BREAKFAST CLUB

Join our Breakfast Club Crew in 2026
Volunteers need on Mondays Wednesdays & Fridays 8-9:00am
Working With Children Check required
Contact our Breakfast Club Coordinator Abbey on 5144 5545
to apply or for more information

SALE PRIMARY SCHOOL
EST. 1853
545

Breakfast Club Volunteers Needed

Sale Primary School is looking for amazing volunteers to help run our Breakfast Club in 2026!

Our Breakfast Club provides students with a healthy start to the day in a warm, welcoming environment and we can't do it without the support of our wonderful school community.

We're looking for volunteers who can help with:

- Preparing and serving breakfast
 - Supervising students
 - Creating a positive, friendly atmosphere
- 🕒 Even one morning a week makes a big difference!

If you're a parent, grandparent, carer, or community member who can spare a little time, we'd love to hear from you.

👉 Please contact our Breakfast Club coordinator Abbey on 5144 5545 for more information or to express your interest.

Thank you for helping us support our students in 2026!

Camps, Sports and Excursions Fund (CSEF)

Information and Application Form



FINANCIAL ASSISTANCE

INFORMATION FOR FAMILIES

Every Victorian child should have access to the world of learning opportunities that exist beyond the classroom. The Camps, Sports and Excursions Fund helps ensure that no student will miss out on the opportunity to join their classmates for important, educational and fun activities. It is part of making Victoria the Education State and the Government's commitment to breaking the link between a student's financial circumstances and their outcomes.

CAMPS, SPORTS and EXCURSIONS FUND (CSEF)

School camps provide children with inspiring experiences in the great outdoors. Excursions encourage a deeper understanding of how the world works while sports teach teamwork, discipline and leadership. All are a part of a healthy curriculum.

CSEF is provided by the Victorian Government to assist eligible families to cover the costs of school excursions, camps and sporting activities.

If you hold a valid means-tested concession card or support an out of home care student you may be eligible for CSEF. A special consideration category also exists for asylum seeker and refugee families. The allowance is paid directly to the school to use towards expenses relating to camps, excursions or sporting activities for the benefit of your child.

The annual CSEF amount per student is \$400 for all school students.

HOW TO APPLY

New applicants should contact the school office to obtain a CSEF application form or download from the website below.

If you applied for CSEF at your child's school last year, you do not need to complete an application form this year unless there has been a change in your family circumstances.

You only need to complete an application form if any of the following changes have occurred:

- **new student enrolments:** your child has started or changed schools this year.
- **changed family circumstances:** such as a change of custody, change of name, concession card number, or new siblings commencing this year.

Check with the school office if you are unsure.

MORE INFORMATION

For more information about CSEF visit:

<https://www.vic.gov.au/camps-sports-and-excursions-fund>



Camps, Sports and Excursions Fund

APPLICATION FORM

School Name

School Ref ID

Applicant details

Surname	
First Name	
Address	
Town/Suburb	
State and Postcode	
Contact Number	

Centrelink pensioner concession OR Health care card number (CRN)

- - -

OR ☐ Veterans affairs pensioner (Gold Card)* OR ☐ Special Consideration**

*Applicants must provide a copy of the Veteran Affairs Gold card.

**Out of Home Care applications must include a letter of support from the institution facilitating the arrangement (for example, Mackillop Family Services or the Department of Families, Fairness and Housing (DFFH)) as evidence of the arrangement and must be no more than 18 months old).

Student details

Child's surname	Child's first name	Student ID	Date of birth (dd/mm/yyyy)	Year level

Declaration

I authorise the Victorian Department of Education (DE) to use Centrelink Confirmation eServices to perform an enquiry about my Centrelink customer details and concession card status to enable the business to determine if I qualify for a concession, rebate or service. I also authorise the Victorian Department of Families, Fairness and Housing (DFFH) to provide the results of any enquiry to DE regarding temporary care orders. I understand that:

- DFFH or Centrelink will use information I have provided to DE to confirm my eligibility for the Camps, Sports and Excursions Fund and will disclose to DE personal information including my name, address, payment and concession card type and status.
- This consent, once signed, remains valid while my child is enrolled at a registered Victorian school unless I withdraw it by contacting the school.
- I can obtain proof of my circumstances/details from DFFH and provide it to my child's school so that my eligibility for the Camps, Sports and Excursions Fund can be determined.
- If I withdraw my consent or do not alternatively provide proof of my circumstances/details, I may not be eligible for the Camps, Sports and Excursions Fund provided by DE.
- Information regarding my eligibility for the Camps, Sports and Excursions Fund may be disclosed to DFFH and/or State Schools Relief for the purpose of evaluating concession card services or confirming eligibility for assistance.

You can request access to the personal information that we hold about you, and to request that any errors be corrected, by contacting your child's school.

Signature of applicant _____

Date ____/____/202__



Camps, Sports and Excursions Fund eligibility

Applications must be submitted to the school as soon as possible and no later than the end of Term 2.

Where a school or family is unsure if the concession card is eligible, they are encouraged to submit the application into the CSEF system for validation.

CSEF payments cannot be claimed retrospectively for prior years.

Queries relating to CSEF eligibility and payments should be directed to the school.

Those who are eligible to apply for the CSEF must meet both of the following two criteria or be eligible for special consideration.

Eligible means-tested cards

Only financially means-tested cards are eligible.

Eligibility date

Eligibility will be subject to the parent/carer's concession card being successfully validated with Centrelink (refer to the department's policy, [Camps, Sports and Excursions Fund \(CSEF\)](#)), on either the first student day of Term 1 or Term 2.

Criterion 1 – General eligibility

The applicant must be one of the following:

- a parent or carer who is the beneficiary of a financially means-tested card
- a student over 16 years who is considered a mature minor and holds a valid concession card (such as a Youth Allowance Health Care Card). Applicant to use the 16 and over application form. For guidance on assessing whether a student is a mature minor, refer to the department's policy on [Mature Minors and Decision Making](#)
- a parent or carer whose child is 16 or over and the beneficiary of a financially means-tested card but are not considered a mature minor. Applicant to use the 16 and over parent consent form.

For students over 16 years of age and where the eligible card is in the name of the student, the fund is only granted to that student, not their siblings.

Criterion 2 – Be of school age and attend a Victorian school

For the purposes of CSEF, students may be eligible for assistance if they attend a registered Victorian school. CSEF is not payable to a student attending pre-school, kindergarten, TAFE or who are home schooled.

Special Consideration

A special consideration eligibility category exists to assist families and students in certain circumstances. Applications should be made through this application form. For more information, refer to: [Camps, Sports and Excursions Fund \(CSEF\): Eligibility](#).

Payment amounts

The CSEF is an annual payment paid directly to the school and will be allocated by the school towards camps, sports and/or excursion costs for your child. Please refer to the department's policy for the current rates and more information, [Camps, Sports and Excursions Fund \(CSEF\): Payment amounts](#).

How to complete the application form

Note: all sections must be completed by the applicant.

1. Complete the APPLICANT DETAILS section.
Make sure that the Surname, First Name, and Customer Reference Number (CRN) details match those on your concession card. You will also need to provide your concession card to the school.
2. Complete the STUDENT DETAILS section for students at this school.
3. Sign and date the form and return it to the school office as soon as possible and no later than the end of Term 2.

Privacy Statement

The Department of Education is committed to protecting your privacy. All information collected will be handled in accordance with the Privacy Data and Protection Act 2014 (Vic) and the Health Records Act 2001 (Vic). This personal information is collected to assess your eligibility to receive a CSEF payment. Your data is securely managed and only shared with Centrelink and DFFH when necessary for business operations or legal compliance. By submitting this form, you consent to our data practices. For more information regarding correction to your personal information or the handling of personal information please email csef@education.vic.gov.au. For more information about the department's privacy policy, please visit: [Schools' privacy policy | vic.gov.au](#)



Community News



FREE EVENT

2026

WELCOME DAY



BOOK HERE

SATURDAY, 31ST JANUARY 10AM-12PM

JAMMIN' DONUTS

KID'S ENTERTAINMENT

JUMPING CASTLE

FACEPAINTING

COFFEE VAN

COME & SEE WHAT THE HUB IS ABOUT!

THIS EVENT RECEIVED DEFENCE COMMUNITY GRANT FUNDING FROM DEFENCE MEMBER & FAMILY SUPPORT, A BRANCH OF THE COMMONWEALTH DEPARTMENT OF DEFENCE



Slap! on your **hat** and Slop! on **sunscreen**, when the UV is 3 or above.

Even on cool and cloudy days.

In Victoria, UV is 3 and above generally from mid-August to the end of April.

sunsmart.com.au

Use all five forms of sun protection



Slap **Slop** **Slip** **Seek** **Slide**



Office Hours
Monday – Friday 8:00am – 4:00pm

Student absence notification
Compass app OR
sale.ps@education.vic.gov.au OR
Phone call to school office

Whole School Assembly 3.00pm every Friday

School Uniform available from
JSM, Macarthur Street, Sale

School Supervision – students are supervised
between the hours of 8.45am and 3.30pm

Second Hand Uniform Sales
at the school office

